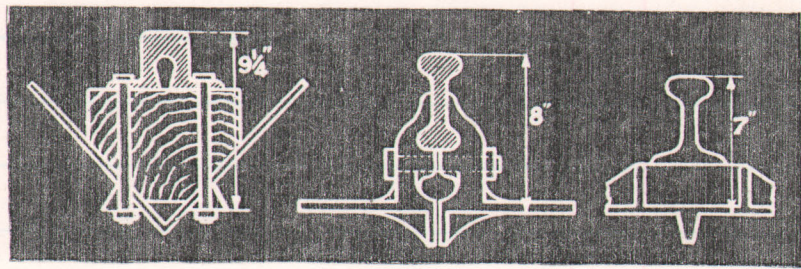


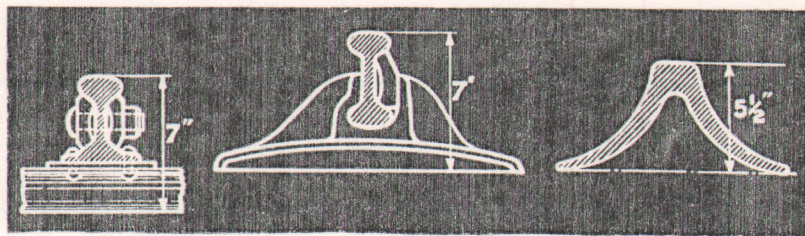
Illustrations of Early Joints—continued.



31.

32.

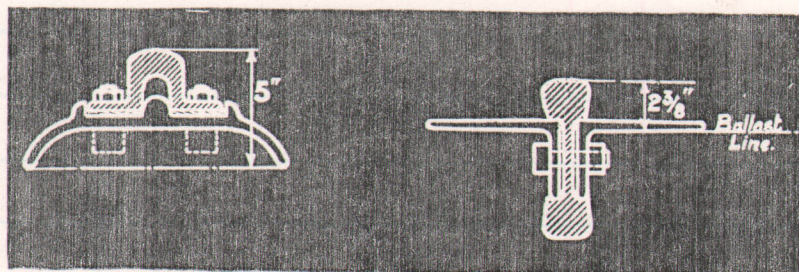
33.



34.

35.

36.



37.

38.

- 31. REYNOLD'S LONGITUDINAL C.I. TROUGH, WOOD LINED.
- 32. 1850. BARLOW'S C.I. SLEEPERS IN HALVES.
- 33. 1853. DE BERGUES CAST IRON PLATES.
- 34. SPENCER'S CORRUGATED C.I. SLEEPERS.
- 35. 1855. BURLEIGH'S CAST IRON SLEEPERS.
- 36. 1849. BARLOW'S SADDLE BACK RAIL.
- 37. 1852. MACDONNELL'S W.I. TROUGH BEARER AND BRIDGE RAIL.
- 38. 1855. ADAM'S SUSPENDED GIRDER RAIL.

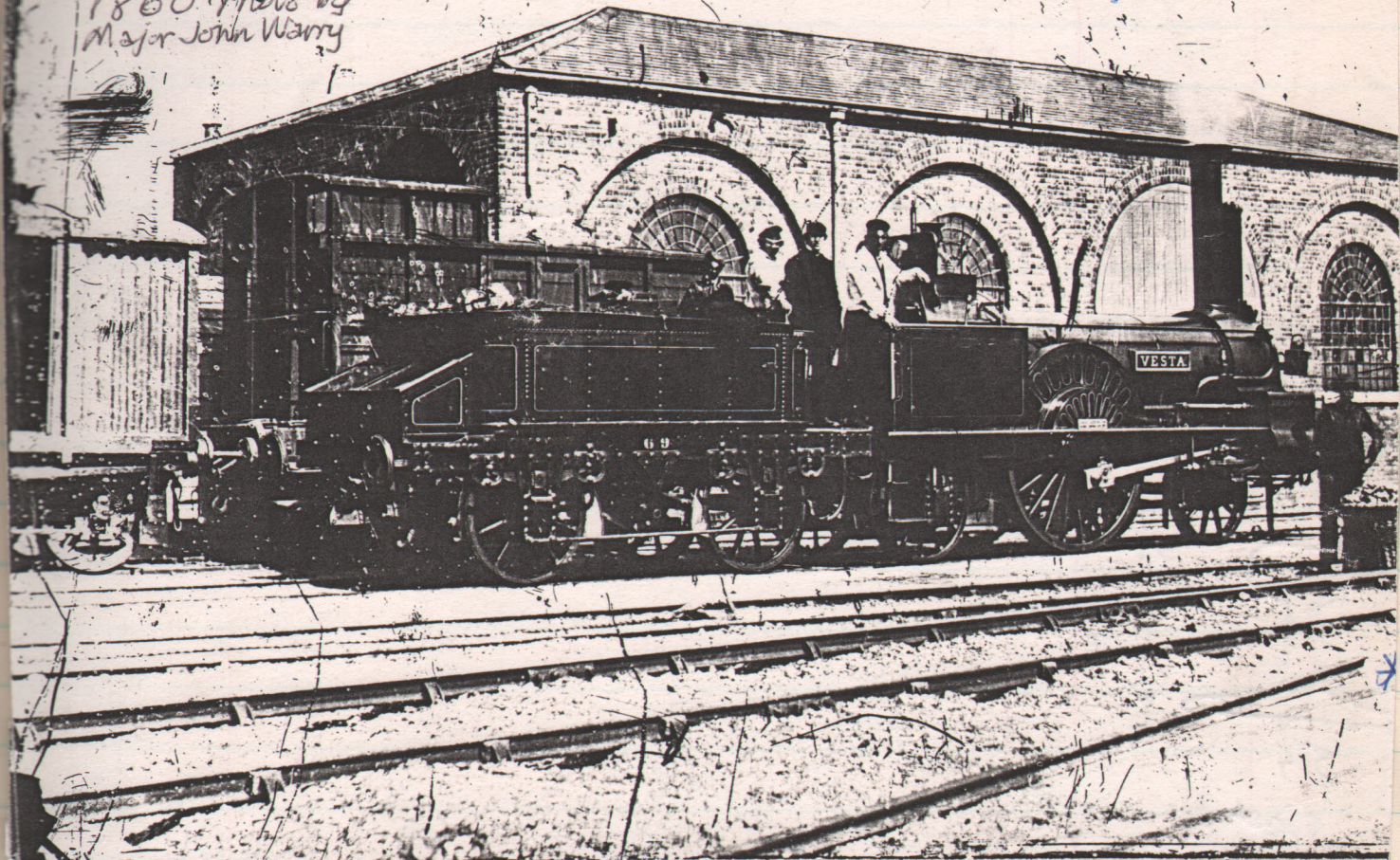
VESTA = Sharp 1870s original 2-2-2 (N838)

Permanent Way: - Double-headed (or double-parallel) 75lb Wrought Iron 15' 0" lengths. Appear to be 3' 0" centres (intermediate 4' 0" (2x2' 0") over joints.

* Looking: Vesta apparently rebuilt, date could be much later (even 1870s)

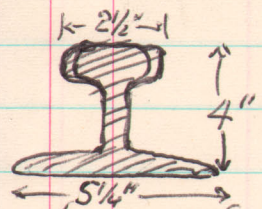
NOTE: Fishplates in use: LSWR used them from mid 1850s. *

1860. Photo by Major John Werry

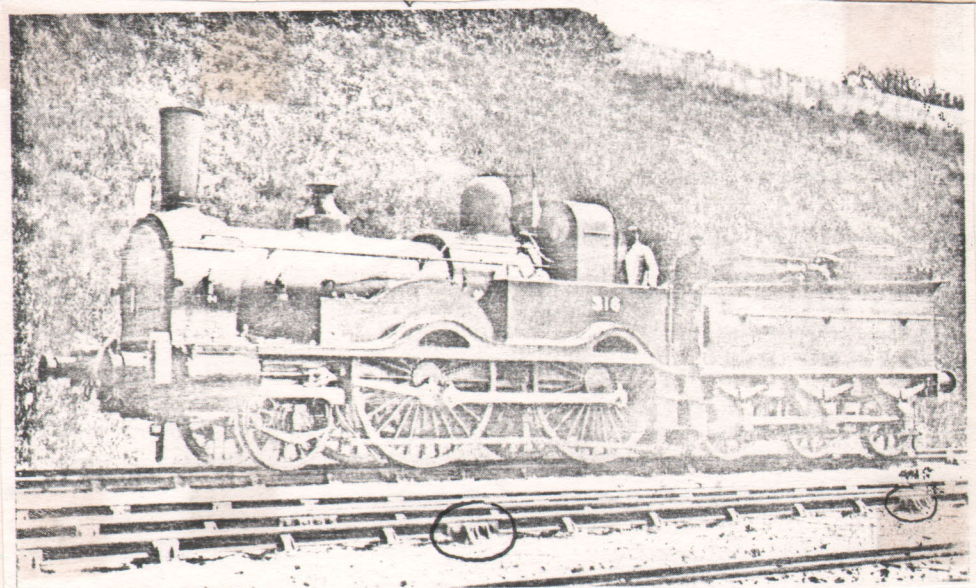


P. 3457 7/Vesta no 8/Vesta as rebuilt in 1855, withdrawn (from Pichette) 1870 (1838)

* Flat Bottom (Vignoles or GWR Branch rail)



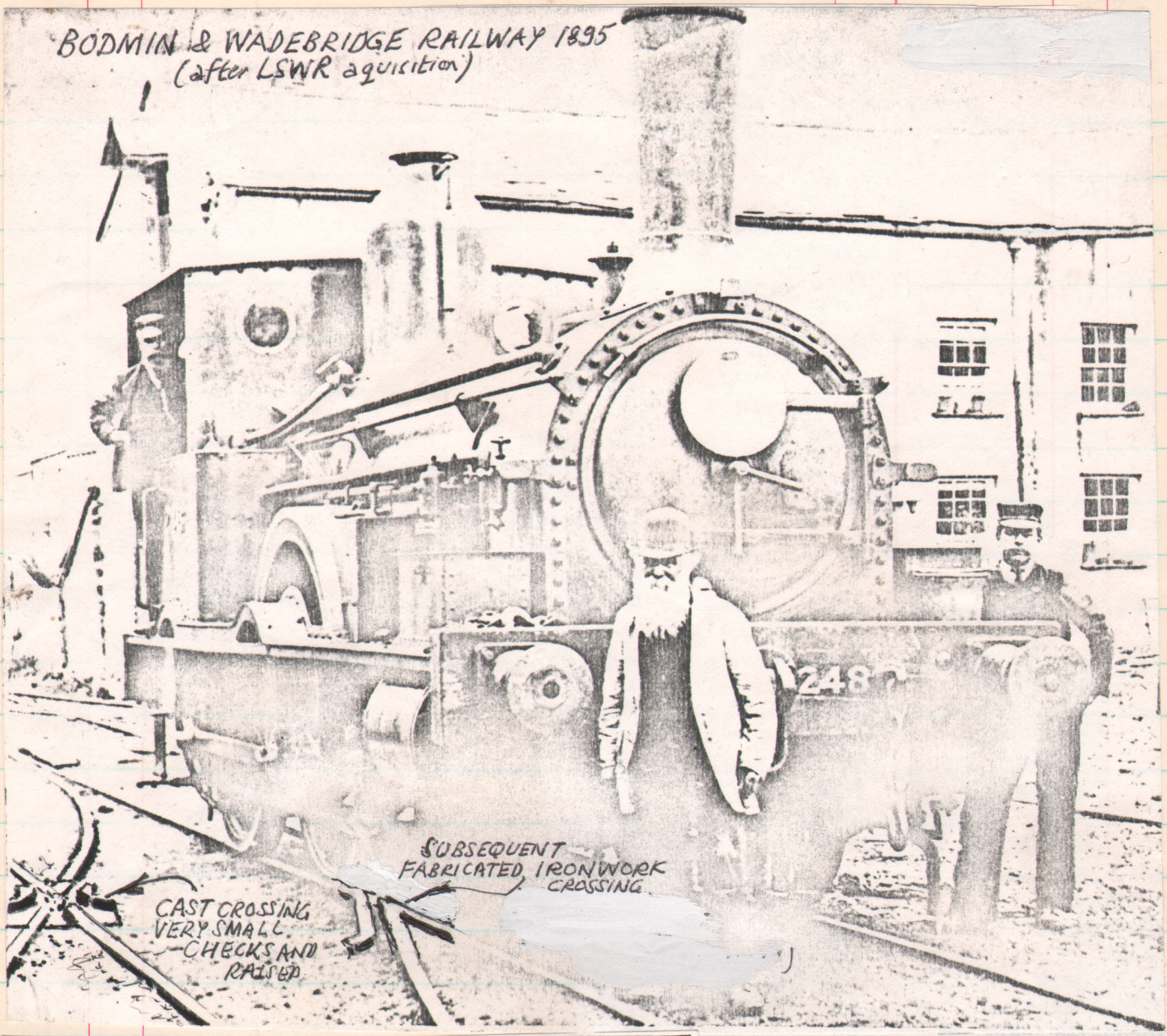
Vignoles rails as found near Weymouth (ex Abbotsbury Bch.?)



Rare view of joint chairs (enlarged above). Fishplated joints (suspended) appeared in 1850s 21' rails: 7 sleepers.

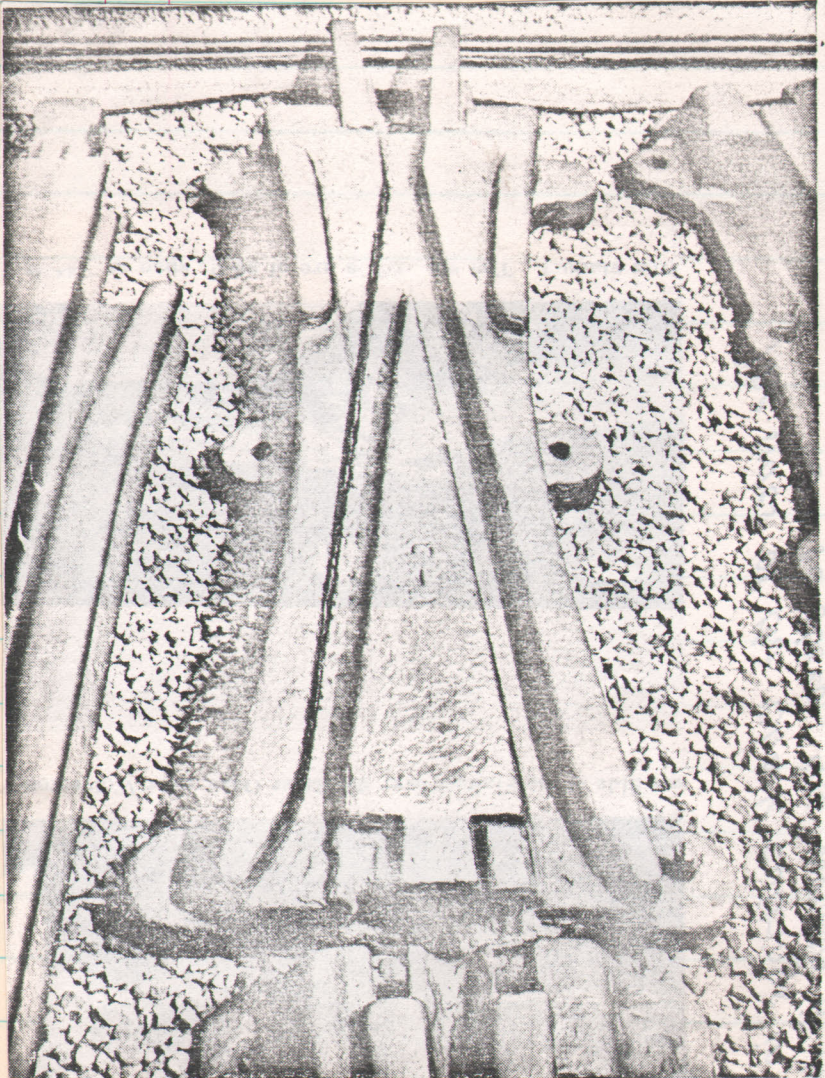
London & South Western Railway

BODMIN & WADEBRIDGE RAILWAY 1895
(after LSWR acquisition)



CAST CROSSING
VERY SMALL
CHECKS AND
RAISED

SUBSEQUENT
FABRICATED IRONWORK
CROSSING



Left: early cast crossing

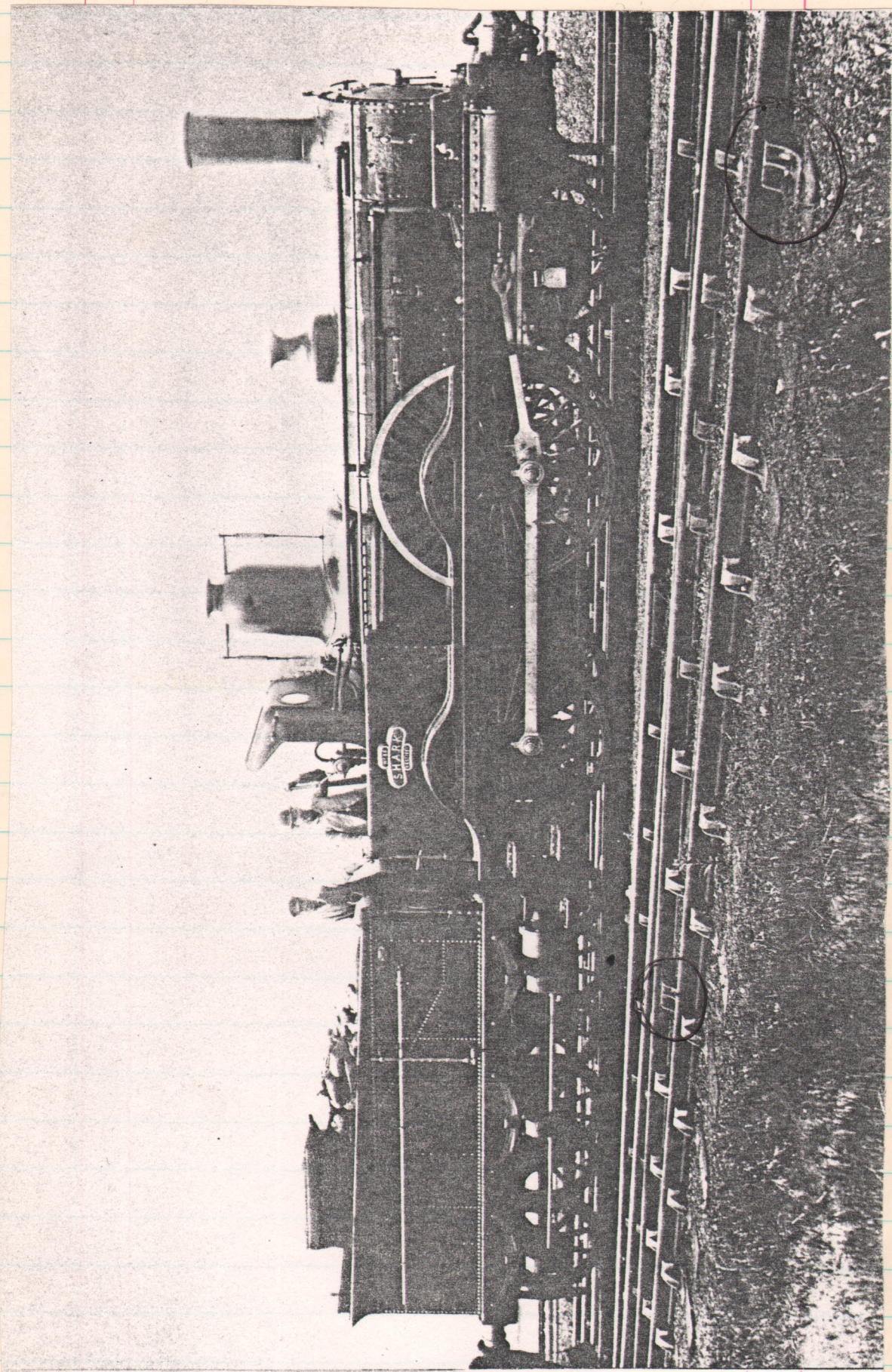


oil can and brush

wooden blocks across hips

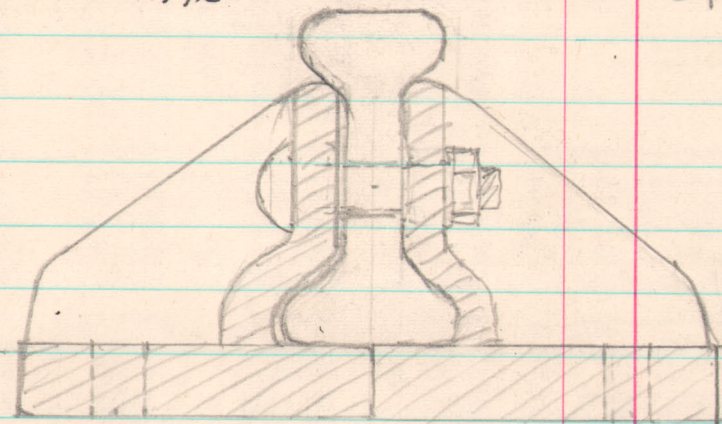
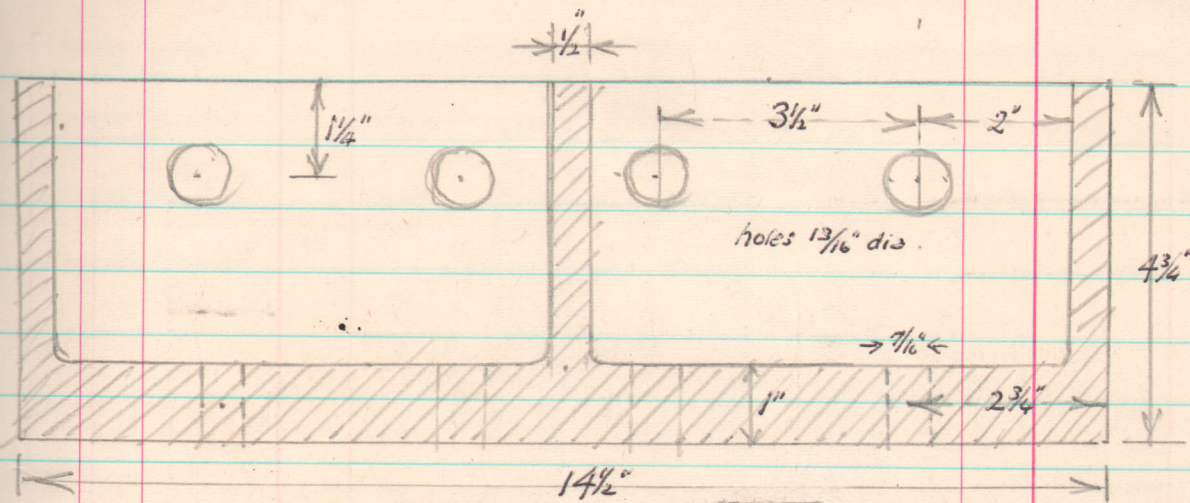
Eastleigh looking towards London c.1875.

* 1'9" platform. (2'2")

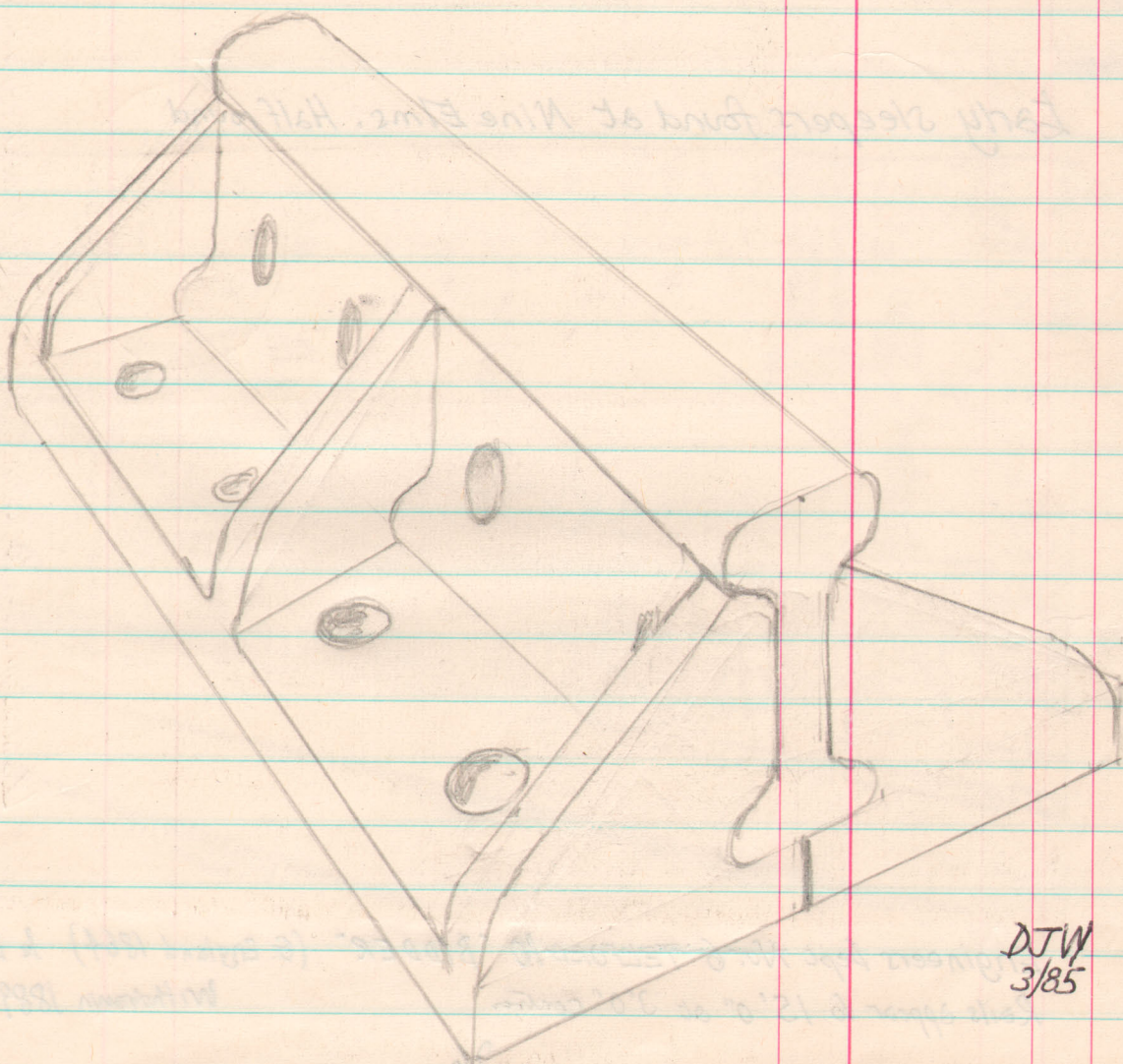


L.S.W.R. Joint Chairs (ringed) 2-hole (web) + 2 treenails/spikes. None of these have been found in stop blocks.

NB: This photo and the two L&Ys → from "Victorian Locomotives" by D. Baxter
 (Moorland Publications Co. 1977 - The Market Place, Hartington,
 Buxton, Derbys. SK17 0AL
 The plates (in possession of?) Manchester Model Railway Society.



As measured by R. Toomer, Overton 1984. See p. 19
 London & South Western Railway, Joint plate.

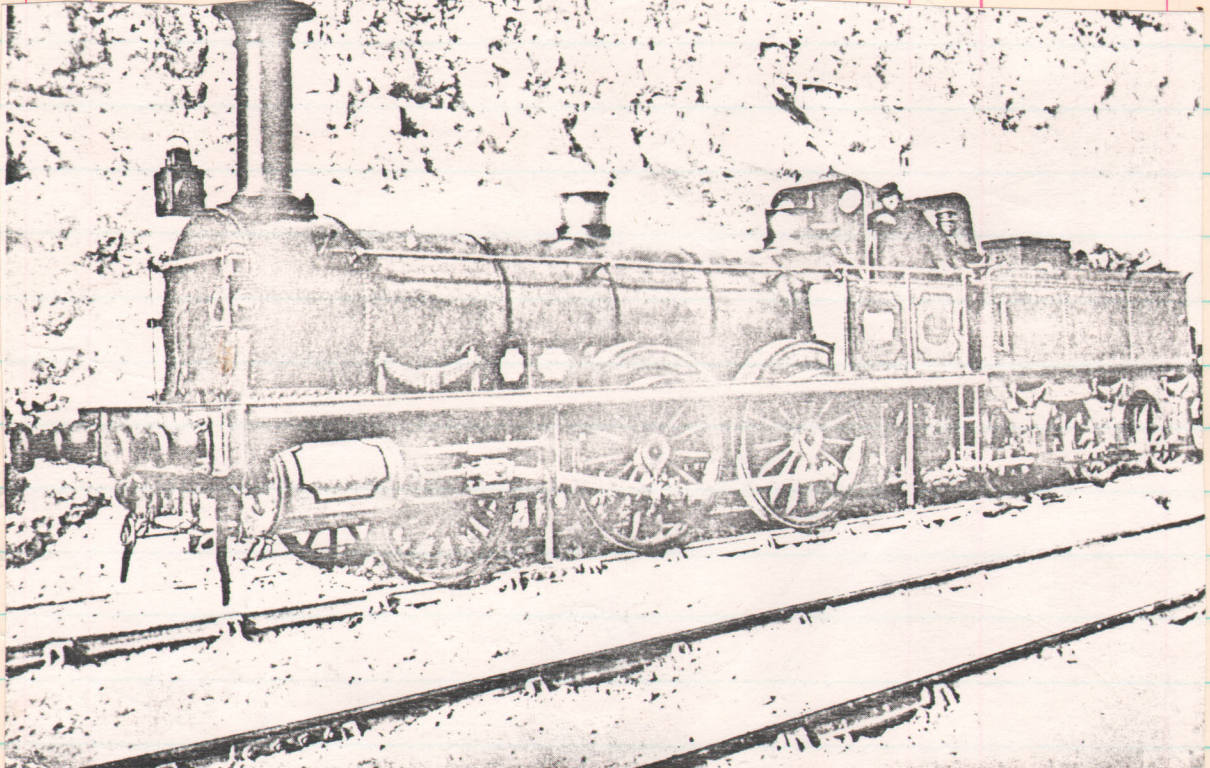


DTW
 3/85

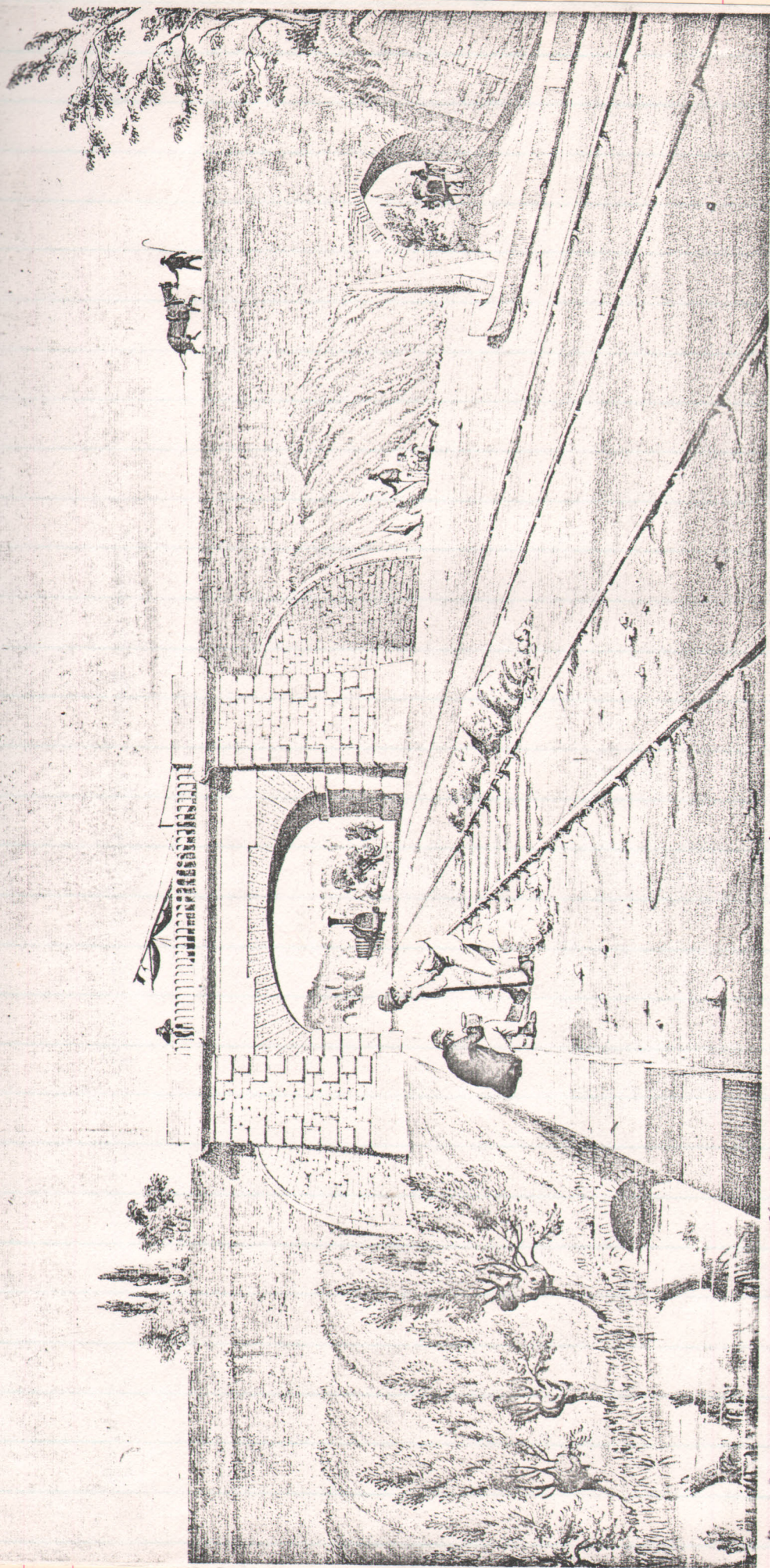
8'6"?



Early sleepers found at Nine Elms. Half round



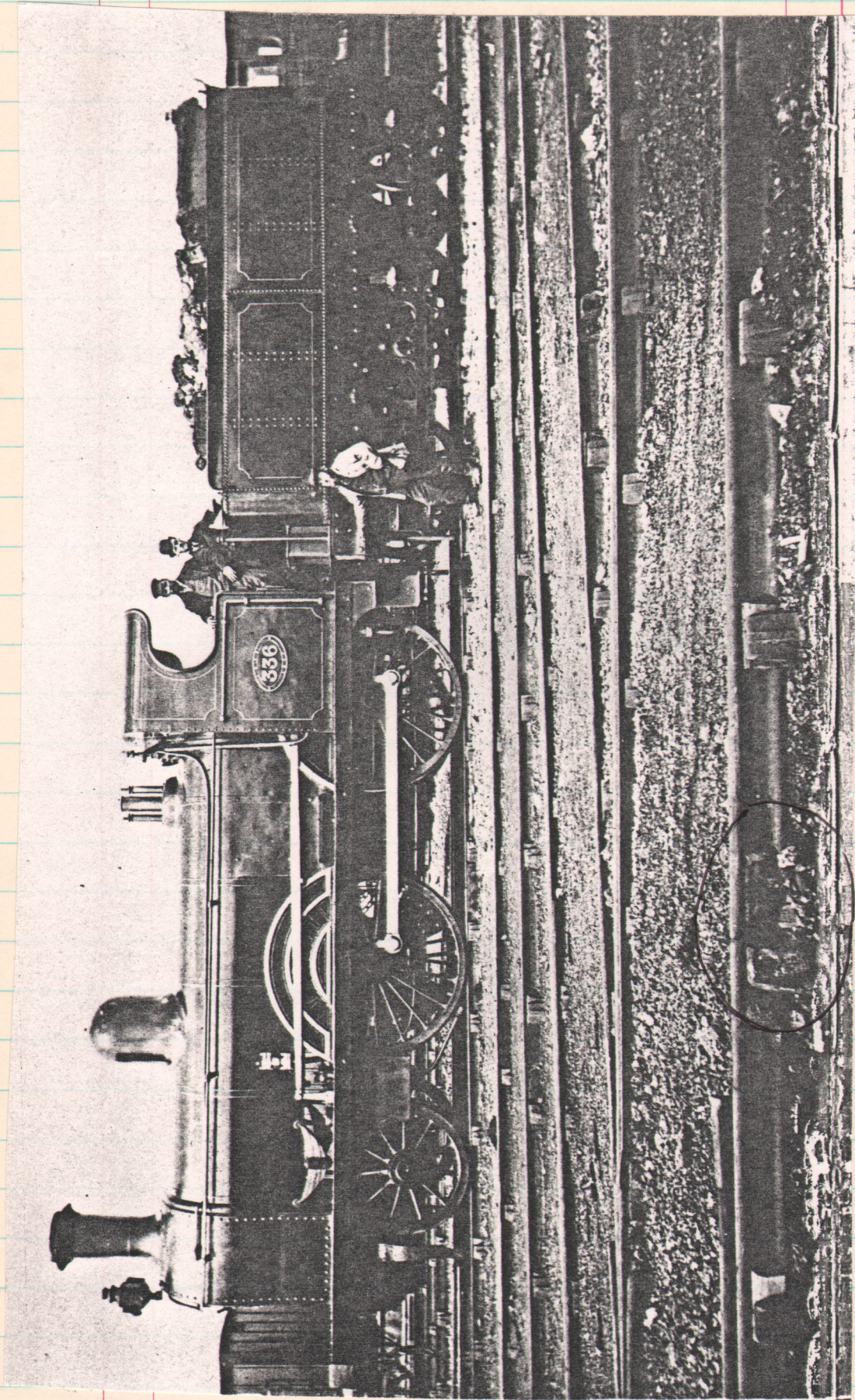
Engineers Dept No. 6 TELFORD 10 "BIDDER" (G. England 1864) to ED 1872
Rails appear to 15' 0" at 3' 0" centres
Withdrawn 1889



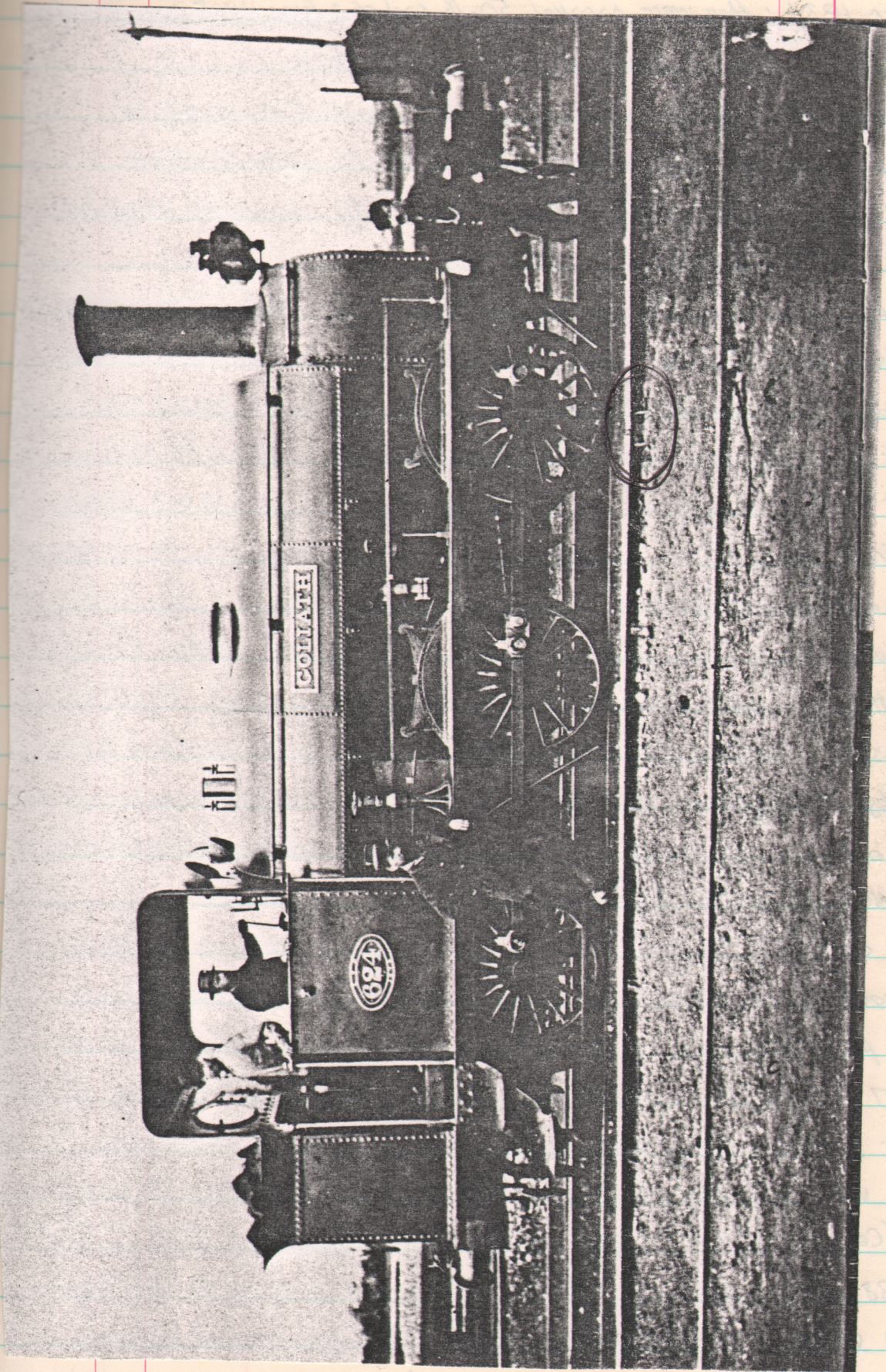
Pre-fishplate era? Rails 15' or 21' cast iron, but wrought iron likely. Joints in chairs

North Midland Railway (Derby-Leeds) Print of 1840 (from 'Early Railway Prints' Phaidon Press). Original coloured

Note: sleepers completely covered, probably gravel; spacings 2-3 feet



Lancashire & Yorkshire Rly : Apparently a joint chair with Fishplate



Lancashire & Yorkshire Railway - Joint Chair